



CSHF Evaluation: Approach, Findings, Next Steps

Presentation to the Community

April 20, 2018

Cari Davis, Executive Director &
Elena Harman, PhD, Vantage Evaluation

Presentation Outline

- Challenge
- Goals
- Approach
- Learnings
- Next Steps
- Discussion/Questions

Thank you!

Many of you contributed time, energy
and insight to this process.

We appreciate you!

COLORADO
SPRINGS
HEALTH
FOUNDATION

THE CHALLENGE



Are we making a difference?

Evaluation

Organizations that DO the work

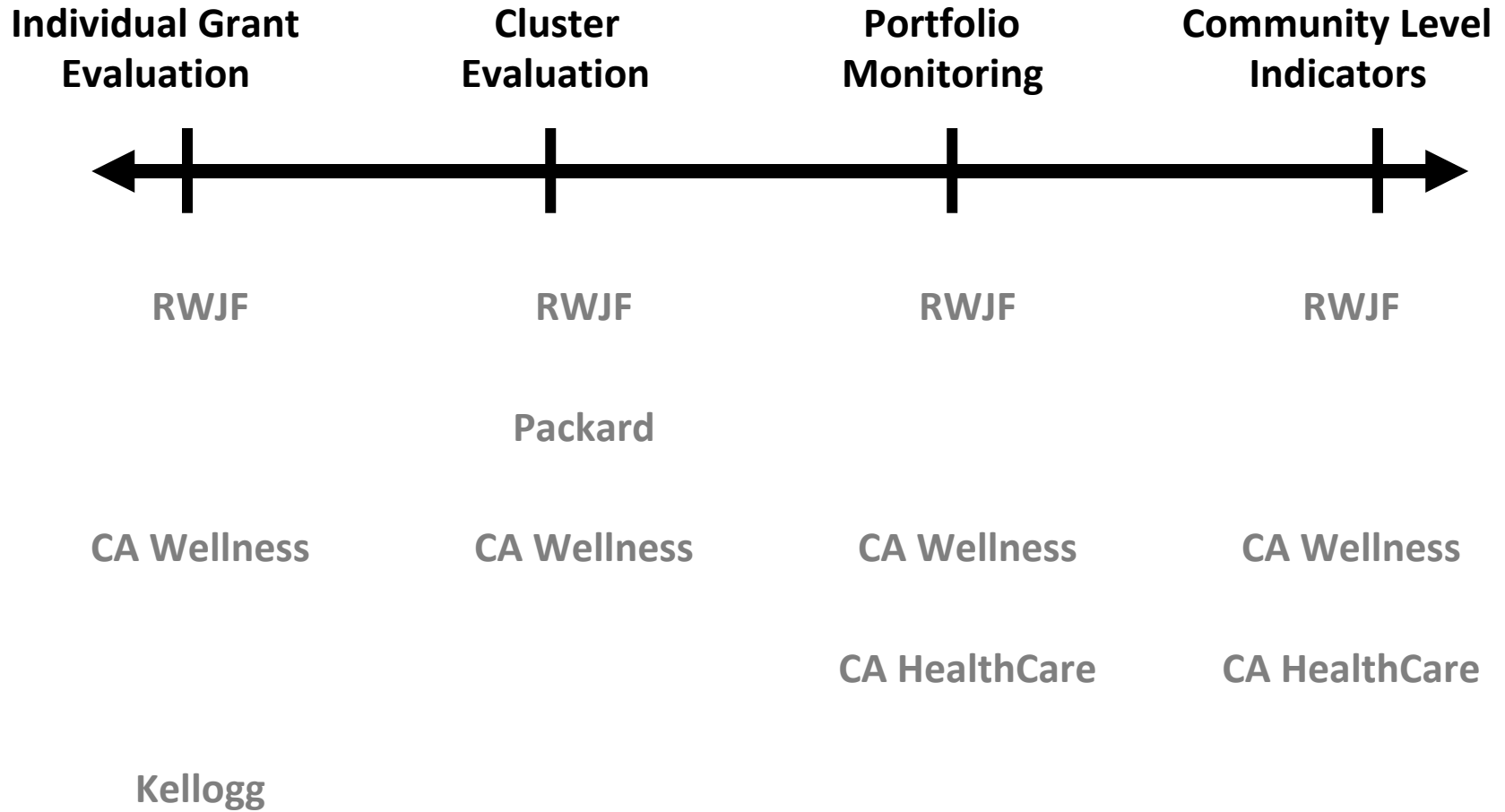
vs.

Organizations that FUND the work

Funder Evaluation



How do Funders Evaluate?



COLORADO
SPRINGS
HEALTH
FOUNDATION

GOALS

Goals for CSHF Evaluation

- Inform Strategy
- Assess Alignment
- Drive Learning

(Reminder: It is impossible to tie CSHF grantmaking to a change in population health outcomes, like diabetes prevalence or the suicide rate. There are too many confounding variables at work.)

Mission, Vision, Funding Focus Areas

MISSION

To target immediate healthcare needs and encourage healthy living

VISION

El Paso & Teller Counties are the healthiest in Colorado

FUNDING FOCUS AREAS

- Expand access to care for those in greatest need
- Address the workforce shortage of primary care or psychiatric providers
- Prevent suicide
- Cultivate healthy environments in high-need, underserved communities
 - Built environment improvements that increase physical activity
 - Improvements to nutritious food access and consumption

COLORADO
SPRINGS
HEALTH
FOUNDATION

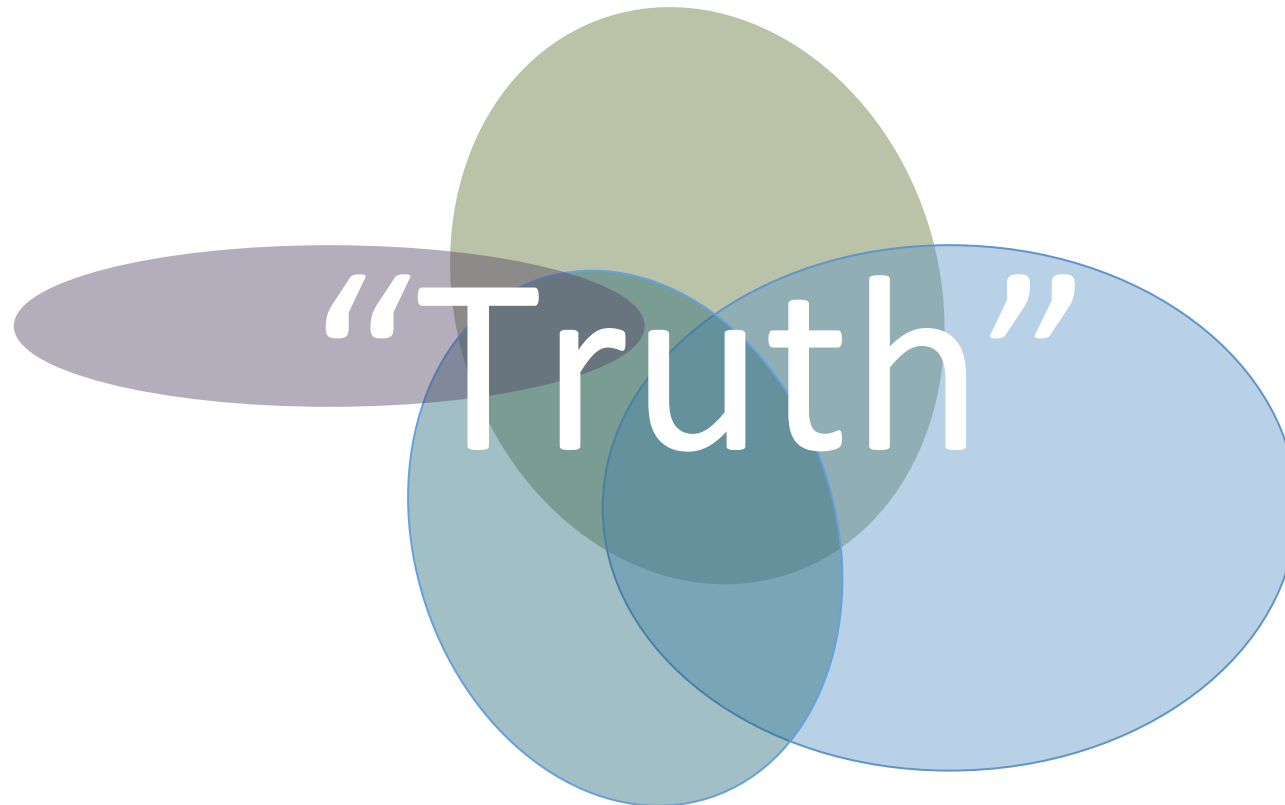
APPROACH

CSHF's Evaluation Framework

← Method →

	Count Data	Content Analysis	Exit Interviews	Community Focus Groups	Community Health Statistics
↑ Goal			X	X	X
	X	X	X		
↓ Goal		X	X	X	
<i>Data Sources</i>	Grant applications, grant decisions and final reports	Grant applications and final reports	Interviews with funded partners, post grant period	Groups of key stakeholders and informants	Numeric data through sources like RWJF, CHI, state and local health departments

Mixed Methods => Truth



Process & Methods

Summer/Fall 2017

- Focus Group & Key Informant Interview (Vantage Evaluation) (1+1)
- Exit Interviews with 2016 Funded Partners (Vantage Evaluation) (25)
- Grant Report Review & Analysis (Vantage Evaluation) (40)
- Community Health Statistics (Colorado Health Institute + CSHF Staff)
- Count Data (CSHF Staff)



Winter 2017-18

- Analysis and reporting
- Staff review of results
- Evaluation/Impact Committee of Board reviews results
- Full board reviews of findings

COLORADO
SPRINGS
HEALTH
FOUNDATION

LEARNINGS

Goals for CSHF Evaluation

- Inform Strategy
- Assess Alignment
- Drive Learning

Informing Strategy: Community Needs Identified



Access to
Care



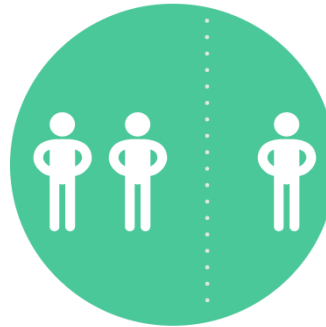
Mental &
Behavioral
Health



Transportation



Awareness



Isolation



Basic Needs



Obesity
Prevention

✓ Healthy
Environments

- ✓ Access to Care
- ✓ Workforce Shortage
- ✓ Suicide Prevention

Informing Strategy: Specific Needs Identified



Access to Care

- Right care at the right time
- Specialty care
- Behavioral health (mental &/ or substance use)
- Lack of/Inadequate providers
- Uncertainty around the ACA
- Inequities in access
- Oral care
- Discontinuity of care
- Provider cultural competence
- Provider burnout/isolation



Mental & Behavioral Health

- Substance use/addiction (including gaming)
- Suicide
- Trauma
- Access to services:
 - Providers
 - Medication
 - Insurance Coverage
 - Stigma
 - Non-user-friendly system

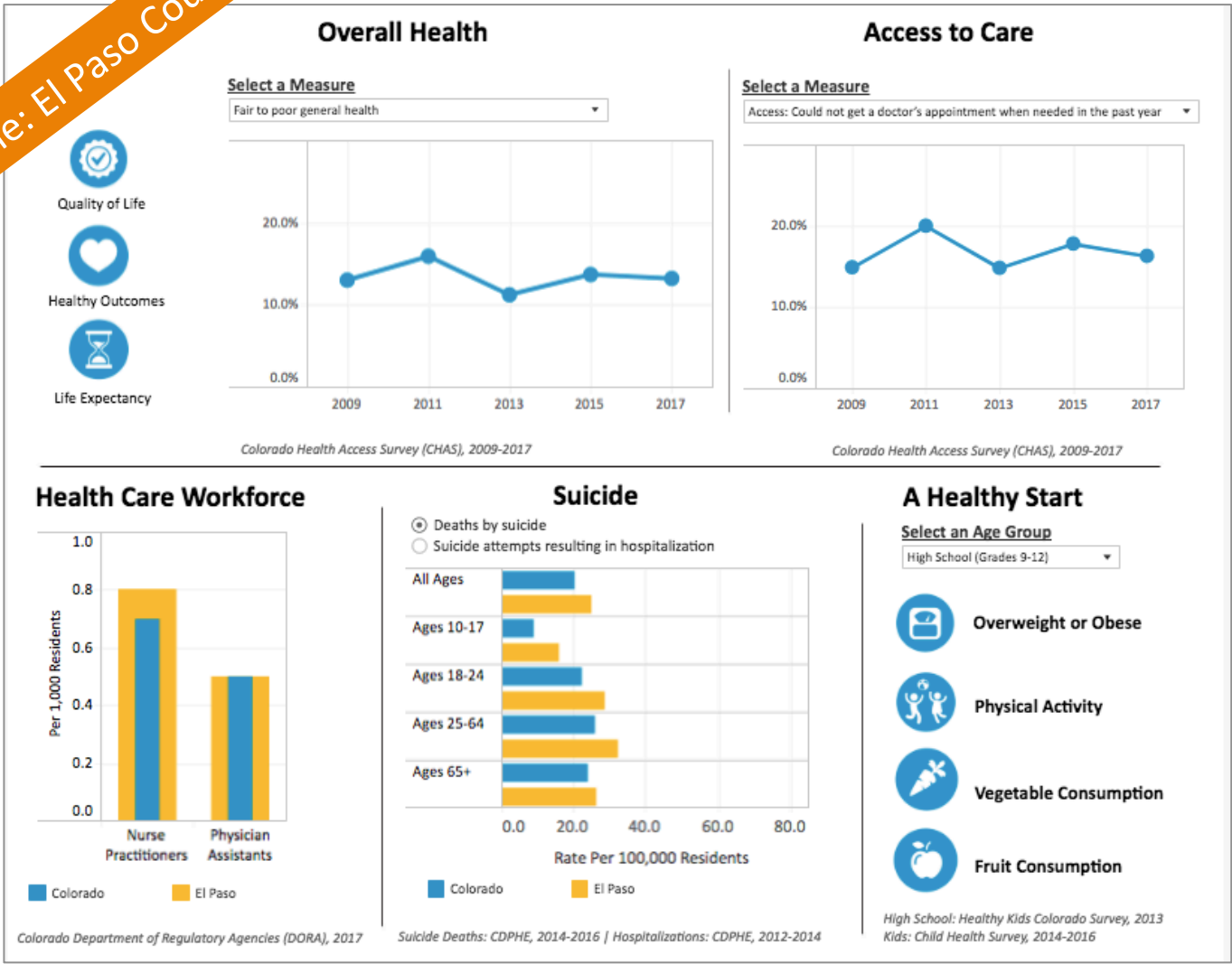


Basic Needs

- Homelessness
- Access to safe affordable housing
- Safety
- Hunger/Access to healthy food
- Poverty

Informing Strategy: Community Health Status Metrics

Example: El Paso County



Colorado Department of Regulatory Agencies (DORA), 2017

Suicide Deaths: CDPHE, 2014-2016 | Hospitalizations: CDPHE, 2012-2014

High School: Healthy Kids Colorado Survey, 2013
Kids: Child Health Survey, 2014-2016

Goals for CSHF Evaluation

- Inform Strategy
- Assess Alignment
- Drive Learning

Assessing Alignment

Did the funding focus areas align with identified community needs?

- Yes, though additional community needs were articulated, e.g. “basic needs” (e.g. housing, food, safety, employment)

Did the grant applications received and funded align with funding focus areas?

- Yes

Did grant activities align with identified community needs?

- Yes, with exception of some “basic needs”

Did the funded partners reach their intended target populations?

- Yes (83%)

Goals for CSHF Evaluation

- Inform Strategy
- Assess Alignment
- Drive Learning

Driving learning

- Funded partners reported successfully carrying out grant activities and meeting project/initiative goals
- General barriers to organizational implementation success included the classic nonprofit sector challenges such as inadequate staffing levels, funding shortfalls, communication.
- Coordinated, collaborative efforts were identified as the most promising solutions to address health issues.
- There was mixed understanding of equity and how the funded partner's work did or did not address equity.

Summary of Key Findings

- CSHF's focus areas align with some, but not all, of the needs that participants cited as the most pressing
- Alignment is strong:
 - Between community needs and funding focus areas
 - Between funding focus areas and grants awarded
 - Between funded partner activities and most community needs identified by respondents
- Relationships matter!

Summary of Key Findings (continued)

- Suggested opportunities for CSHF to make an even greater impact:
 - Address “basic needs” (a/k/a social determinants of health): housing/homelessness, transportation, community safety, food security, anti-poverty initiatives, etc.
 - Take a broader prevention focus (more upstream)
 - Target populations earlier in life (early childhood; two-generation approaches)
 - Help encourage and/or enable a “systems-level” understanding and approach to problem-solving and service delivery

Thoughts? Reflections? Questions?

What resonated with you?

What surprised you?

What seemed off-base or inconsistent with your experience?

Anything else?

COLORADO
SPRINGS
HEALTH
FOUNDATION

NEXT STEPS

Next Steps

- CSHF Board is using the learnings to assess its current state and plan for the next 18 months. This work is currently underway. Changes, if any, will be communicated no later than the end of 2018 and likely before.
- CSHF Board and staff plan to learn more about some of the community needs articulated and identified
- The Board and staff are determining the 2018 evaluation approach:
 - It will likely be a mixed methods approach again
 - Many of our 2017 funded partners will have the opportunity to contribute

COLORADO
SPRINGS
HEALTH
FOUNDATION

QUESTIONS?